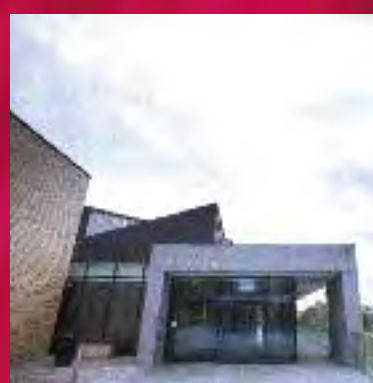
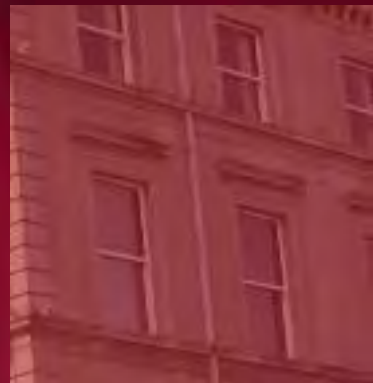
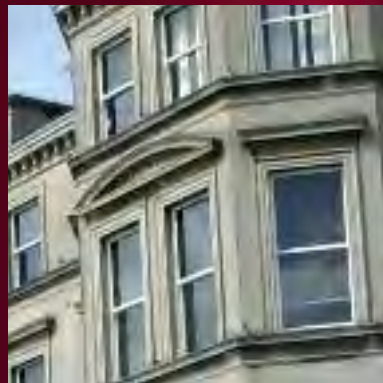
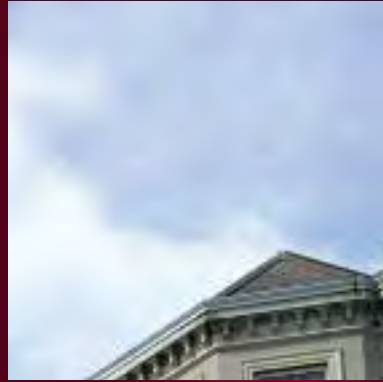


BRIATHAR DÉ MO LÓCHRANN



COLÁISTE MUIRE GAN SMÁL
OLLSCOIL LUIMNIGH

MARY IMMACULATE COLLEGE
UNIVERSITY OF LIMERICK





Contents

- Foreword by Chairman
- Introduction by President
- Governance
- Strategic Planning
- Graduation 2010
- 2010-2011 Highlights
- International Links
- Professional Development
- Services to the Community
- Support Services
- Student Life
- Teaching & Learning
- Diversity and Lifelong Learning
- Academic Support & Retention
- Institutional Commitment to Research Support

- Appendices
- Organigram
- Financial Report
- Overview of Energy Usage 2010

Introduction

Professor
Michael A. Hayes
President

The 2010-2011 Annual Report covers the period from 1 September 2010 to 30 September 2011. The report highlights the busy life and wide ranging activities of a College that is vibrant and developing. The inauguration of an Annual Report is welcome in that it will provide a tool for annually taking stock and benchmarking progress made.

In recent years, MIC has witnessed extraordinary change, development and growth. The College and its staff have been swift to identify new opportunities on the educational landscape and have successfully adapted and innovated in order to make the most of the opportunities arising. As is reported here, there has been significant expansion in the support services and facilities available to students. Funding was obtained to support improvements in Quality and in the standards of Teaching and Learning.

Taking a longer-term perspective, it is certain that the most significant development for Mary Immaculate College in the year 2010-2011 relates to the physical development of the College. Following the Multi-Purpose Educational Facility (Tailteann) built in August 2005, the new TARA building doubles the previous capacity of the College with 8,500 square metres of additional space.

The year 2010-2011 marked considerable progress and achievement on campus. The pages which follow attest to many other achievements and cusses during this year. These pages continue the story of a College with a long and proud tradition, confident in its capacity to address new challenges and changing circumstances. I want to acknowledge and thank all who have contributed in words and deeds to this report and to the work of the College and all of its staff in the period covered by the report. I wish to pay a special tribute to the Associate Vice-President, Prof. Gary O' Brien, for his work in coordinating the draft report and preparing it for publication.

Michael Hayes

Prof. Michael Hayes
An tUachtarán



Foreword

Fr. Tony Mullins
Chairperson

It gives me great pleasure to present the 2010-11 Annual Report for Mary Immaculate College

The report highlights the tremendous work being done in the College, particularly during 2010-2011. The range of activities is inspiring and reflects the vibrant and growing nature of the College. The activities also highlight how fortunate the College is to have such wonderful staff members, all of whom work very hard to ensure that the students attending Mary Immaculate College are being provided with the best learning experience possible. On behalf of An Bord Rialaithe I would like to congratulate the President, staff and students on all that has been achieved.

Particularly noticeable in the report is the commitment to diversity in MIC. The College's various access programmes have been successful in enabling mature students, students with a disability, students from ethnic minorities and students from socio-economically disadvantaged backgrounds, to enjoy participation in a host of programmes.

Diversity is also evident in the continued growth of College programmes offered, with particular successes in the development of learning and research opportunities at postgraduate level.

The most visible success highlighted in the report is the completion of the TARA Building which has begun the main hub for teaching and learning in the College. It is a physical expression of the blossoming of MIC as we move into the second decade of the Twenty First Century and of the exciting future in prospect for the generation of students to come.

May God bless the College staff and students and support the continuation of the great work taking place in Mary Immaculate College for the next academic year and beyond.

Fr. Tony Mullins
Chairperson



Governance



An Bord Rialaithe

An Bord Rialaithe is the Governing Body of MIC. The MIC Trustees have charged An Bord Rialaithe with the responsibility of overseeing the affairs of the College.

The members An Bord Rialaithe during 2010-11 included:

Very Rev. Tony Mullins (An Cathaoirleach), Prof. P. Cremin (An tUachtarán), Prof. M. Breen Dean of Arts, Mr N. Byrne (MISU Vice-President), Dr. L. Chambers, Ms M. Collins (MISU President), Dr. P. Connolly, Mr. T. Donoghue, Prof. M. Healy (Associate Vice President Research), Prof. G. O'Brien (Associate Vice President Administration), Prof. T. O'Doherty, Dean of Education, Sr. E. Ryan, Mr. J. Coady (Vice President Administration & Finance), Mr. J. Dalton, Prof. E. Wall (Vice President Academic Affairs), Sr. M. O'Kelly, Dr. C. O'Sullivan, Dr. D. Ní Chróinín, Sr. B. Coman, Mr. J. Hayden, Ms. A. Kavanagh, Ms. G. Moloney, Ms D. Morrissey, G. Uas. Ó Tiarnaigh, Fr. Michael Wall, Fr. L. Walsh, Ms. C. Spooner, Ms. R. Godfrey, Mr. R.B. Haslam, Dr. A. Looney, Ms. M. O'Brien.

An Bord Rialaithe met quarterly in 2010/2011. The following issues were considered:

- Financial matters
- Progress of various sub-committees
- Development in various policy documents
- Building programme and development plan
- Mary Immaculate College (MIC) Strategic Plan
- Student intake and applications to Central Application Office (CAO)
- Governance

An Coiste Bainistíochta an Choláiste:

Prof. Peadar Cremin – An tUachtarán (Cathaoirleach), Prof. Eugene Wall – Vice President Academic Affairs (Leas Cathaoirleach), Prof. Michael Breen – Dean of Arts, Prof. Gary O'Brien – Associate Vice President Administration, Fr. Michael Wall – Academic Staff Representative, Ms. Rachel Godfrey – Professional & Services Staff Representative, Mr. John Coady – Vice President Administration & Finance, Prof. Teresa O'Doherty – Dean of Education, Dr. Deirdre Ní Chróinín – Academic Staff Representative, Prof. Michael Healy – Associate Vice President Research.

Governance

An Coiste Bainistíochta an Choláiste met 21 times during the Academic Year 2010-11. Its remit is to advise the President on the day-to-day management of the College. Policy, staffing and finance issues are dealt with by the committee.

An Bord Acadúil

An Bord Acadúil is the Academic Council of the College. It met 10 times during the Academic Year 2010-11 and considered a wide range of issues including:

- Approval of Awards
- Approval of programme design and modification
- Review and re-conceptualisation of the Bachelor of Education programme

Strategic Planning

A new draft Strategic Plan was placed on the College website and a written invitation was extended to over 100 external partners/stakeholders with feedback sought in the following areas:

- Offer general comments on the plan;
- Submit suggestions for measurable actions that may be linked to the goals and strategies contained within the plan;
- Identify specific linkages that might be created between MIC and the respondent institution / organisation within the framework of the plan.

Graduations

Three graduation ceremonies took place in the College on 21st & 22nd October 2010. Awards were conferred upon a total of 996 students graduating from 25 programmes. See Appendix 3. In his speech, the College President congratulated all graduands and joined with them in celebrating their academic achievement which has been publicly ratified by the University of Limerick. The Conferring ceremonies were attended by MIC Trustees and An Bord Rialaithe with Most. Rev. Bishop Donal Murray and the President of the University of Limerick.



2010-2011 Highlights

SEPTEMBER 2010



On Sept 3rd, **President of Ireland Mary McAleese**, visited the campus to present the **McAuley Medal** to renowned artist **Imogen Stuart RHA** in honour of her lifetime contribution to the Arts in Ireland. This honour, *the McAuley Medal*, is the highest award that can be bestowed by the College. It is named in memory of **Catherine McAuley**, the founder of the Catholic Sisters of Mercy, whose outstanding dedication to the most marginalised members of the community continues to inform the College's ethos.



Taoiseach, Mr. Brian Cowen, T.D. officially opened two campus buildings, Teamhair / TARA and Tailteann. The Teamhair / TARA building doubles the previous capacity of the College with 8,500 square metres of additional space. The four storey building, which was built at a cost of €17 million, contains a 500 seat auditorium, four large lecture theatres, a stimulated classroom, microteaching rooms, meeting rooms, teaching laboratories, computer laboratories, seminar rooms, a mediation room, counselling rooms, Students' Union facilities and a spacious Student Forum. Tailteann, a state-of-the-art sports complex and also a facility for physical education of primary teachers, was completed in 2007 at a cost of €16 million and was voted Best Leisure Building of the Year at the 2008 Royal Irish Architecture Awards.

OCTOBER 2010

8 students of MIC were conferred with the Award of Doctor of Philosophy, along with an additional 1000 students from 22 counties and five different countries, who were conferred with awards on the College's four Undergraduate programmes, diploma programmes, graduate diploma programmes and Masters programmes.

Awards for Outstanding Achievement, an award presented by the College to students who, in the year of the award, demonstrate outstanding achievements in any field of endeavour, were presented to Clodagh Reidy for her part in the Limerick Ladies' Football Junior All Ireland title, Shane McGrath and Darragh Egan for their contribution towards Tipperary's Senior Hurling All-Ireland win and Kate Crotty, from Ennis, a student on the Certificate in Contemporary Living programme who received the award in recognition of her Special Olympics All Ireland National Gold Medal for the 25 meter back stroke competition.

The 2010 annual gathering of the Irish Association for French Studies (ADEFI) was hosted by the Department of French Studies on 29 and 30 October 2010. Colleagues and postgraduate students working in the field of French Studies from all around Ireland took part in a two-day workshop at Mary Immaculate College. On this occasion, Dr Loïc Guyon was elected to the position of President of the Association while College lecturers Darach Sanfey and Gillian Jein were respectively elected to the positions of Treasurer and Publicity Officer.

NOVEMBER 2010

Fergus Finlay, Chief Executive of children's charity Barnardos, along with his wife **Frieda Finlay**, Chairperson of Inclusion Ireland, were guests of honour at the Celebration Evening of the **Pilot Programme in Contemporary Living** held in the College this month. This programme was piloted by the Faculty of Education in 2010-2011 and was formally launched on 2 November 2010. Sixteen students were enrolled in the first year of this programme. The pioneering course includes as its objectives the promotion of lifelong learning for individuals with intellectual disabilities, the promotion of inclusion in the third level environment, the development of social skills through interaction, the fulfilment of personal educational interests, the enhancement of individual employability and the promotion of full citizenship and self-determination.

Local artist David Lilburn and artists Anne Cleary and Denis Connolly were separately commissioned by MIC to create new pieces of artwork for the College. Under the **Public Art – Per Cent for Art Scheme** MIC invited expressions of interest from established artists, earlier this year, wishing to create unique work/s in any medium with an allocated budget of €100,000. Following receipt of almost 70 applications from home and abroad the panel selected Mr. Lilburn, with his proposal currently entitled *A Map*, and Ms. Anne Cleary and Mr. Denis Connolly, with their proposal entitled *Colour Wheels*, as the successful artists.

DECEMBER 2010



In 2010 upon the **College's Foundation Day** (Feast of the Immaculate Conception) we celebrated our 112th anniversary. That date was also the 5th anniversary of the launch of the MIC Foundation. The Foundation contributes to a range of student supports as well as funding the purchase of a number of properties adjacent to the College.

December 2010 also saw the launch of the very successful **Have A Seat campaign** whereby seats in the recently completed 500 seat Lime Tree Theatre were sponsored by various individuals and companies for €250 each.

JANUARY 2011



January saw the celebration of an innovative resource for people who work in any aspect of Music Education when www.irishmusiceducation.ie was launched at Mary Immaculate College with guest speakers **Gerry Godley** (Lyric FM Presenter) and **Elaine Agnew** (renowned Irish composer) and a participatory performance of Cardew's *The Great Learning*. The website, which is the brainchild of **Ailbhe Kenny**, a lecturer in music education with MIC and **Patricia Flynn** from St. Patrick's College Dublin, was the first of its kind in Ireland and signified an important new direction for music education in the country. It was set up to connect people who work in any aspect of music education, whether it is practice or research, formal or informal, based in school, studio, college, cultural organisation or wider community, and with people of any age or professional level within a multitude of music genres.

Minister Peter Power TD officially launched a symposium held in the College, celebrating the culmination of three years of work by the Centre for Global Development through Education (CGDE), based at the College. This symposium was attended by delegates from the Republic and Northern Ireland, as well as from Africa. The CGDE is the lead partner of a consortium of twelve Irish and two African Higher

2010-2011 Highlights

JANUARY CONT'D 2011

Education Institutes and two African Ministries of Education in Lesotho and Uganda. It is funded through the Programme of Strategic Cooperation between Irish Aid and Higher Education and Research Institutes (2007-2011).

Following Dr Loïc Guyon's visit to the Lycée Militaire (Military College) of Aix-en-Provence (France) in November 2010, an inter-institutional agreement was signed whereby, an English Language Assistantship will be offered every year by the Lycée Militaire to a BA or a B.Ed. graduate of Mary Immaculate College. The Assistantship involves approx. 12 hours of teaching a week for the entire duration of the school year (from September to April) for a monthly salary of about €900. The Language Assistant from Mary Immaculate College will also be given free accommodation and free meals at the Military College, in the city centre of Aix-en-Provence.

FEBRUARY 2011



Ireland's up-and-coming sporting champions were out in force as the GAA Bursary Awards were presented to ten of the College's highest achieving athletes. Mr. Robert Frost, Vice-Chairperson of Munster GAA Council, was present on the night to award the six Munster Council Higher Education GAA Bursaries, valued at €1000 each. The successful recipients were: Róisín McMahon, Clare Camogie and Football Munster Underage Champion and Lynch Cup Medal winner 2010, Eanna O'Connor, Munster Minor Gaelic Football Champion from Kerry, Shane Nolan, Munster Junior Hurling Champion with MIC and County Football Finalist 2010 from Tipperary, Fiachra Lynch, Cork Intermediate Football Champion and All-Ireland Senior Football Champion 2010, Niamh Ní Chaoimh, MIC Senior Camogie and Football player, winner of Lynch Cup and Division 2 League title, and Elaine Doyle, winner of 5 Inter-county Senior All-Ireland medals, 5 National Football League Division 1 Medals and 7 Munster Senior Football medals with Cork.

Pictured from (L-R): Shane Nolan from Tipperary; Róisín McMahon from Clare; Niamh Ní Chaoimh from Cork; Robert Frost, Vice-Chairperson of the Munster GAA Council; Elaine Doyle from Cork; Eanna O'Connor from Kerry and Fiachra Lynch from Cork.

MARCH 2011



On March 4th The Annual Conference of the Institute of Guidance Counsellors (IGC) took place in TARA. Over 500 guidance counsellors were hosted on campus throughout the day. The event provided the College with an important opportunity to showcase its wonderful student facilities and the guests departed with a very positive impression of the new campus infrastructure as well as the warm hospitality always shown by MIC to its visitors.

Under the auspices of the Irish Phenomenological Circle (IPC), the Department of Philosophy at Mary Immaculate College hosted a very special inter-institutional workshop, dedicated to the thought of Martin Heidegger (1889-1976) and Emmanuel Levinas (1906-1995), on Friday and Saturday, 25th & 26th March, 2011.

APRIL 2011



In April Mary Immaculate College announced the appointment of Professor Michael A Hayes as its new President, to succeed Professor Peadar Cremin, whose term of office ended on August 31, 2011. The Chair of the Governing Body of Mary Immaculate College, Very Rev. Fr. Tony Mullins stated that, "There was an exceptional field of candidates for this post and we are extremely fortunate and pleased that Professor Hayes has accepted the offer of the position and is looking forward to bringing his experience to bear on the challenges which face Mary Immaculate College in a rapidly changing Ireland."

MAY 2011



Mr. Ruairí Quinn TD, Minister for Education & Skills, officially opened the National Centre for Excellence in Mathematics and Science Teaching & Learning. A partnership with UL under the aegis of the Shannon Consortium, the Centre will support primary maths and science teaching and learning through its programme of postgraduate studies to Masters and PhD level and through its programme of continuing development for primary teachers of maths and science. The key objectives of the NCE-MSTL are to address the teaching and learning of mathematics and science, in line with the recently announced draft plan for numeracy, with the aim of increasing student uptake of these subjects and increasing their levels of achievement at primary and secondary school levels through to third and fourth levels.

In May the following publication was presented: *Voyage et Théâtre du XVIe au XIXe siècle*, Loïc P. Guyon et Sylvie Requemora-Gros (ed.) (Paris : Presses de l'Université Paris-Sorbonne, coll. 'Imago Mundi', 2011). This volume co-edited by Loïc Guyon deals with the representation of travel on the French theatrical stage from the sixteenth to the nineteenth century. It constitutes the first substantial study ever published on this particular aspect of travel literature. The book is dedicated to the sources of theatrical exoticism, the stage adaptations of travel narratives, the artistic and technical challenges of the representation of travel on stage, and the ideological contexts in which those plays were written and performed.

The Department of Geography hosted the annual Conference of Irish Geographers (CIG) from Friday 6th May to Sunday 8th May, 2011. The CIG is the main academic gathering of third-level geographers working in Ireland, or on the geography of Ireland.

2010-2011 Highlights

MAY CONT'D 2011

The 2011 event attracted participants from the US, Canada, France, the Netherlands, Finland and the UK, as well as Ireland. Papers delivered ranged across the entire span of the discipline, with sessions addressing themes such as: climate change; conservation, heritage and landscape; difference and space in the city; new geographies of health care; geographical education; landscape and memory; and migrants, meaning and identity. The keynote address was delivered by Prof. Kevin Ward of the University of Manchester, and the special guests of the conference were Professor Audrey Kobayashi and Professor Doug Richardson, President and Executive Director respectively of the Association of American Geographers.

JUNE 2011



Enthusiasm for soccer was very evident in Mary Immaculate College as over 120 children from local schools competed in the third annual League o'Legends soccer tournament hosted by the Curriculum Development Unit (CDU) of the College. 13 teams from 10 local primary schools take each other on in what was a fine display of competitive football skills, before St Anne's Girls NS, Rathkeale and Scoil Íosagáin CBS, Limerick emerged as the League o'Legends 2011 champions. The annual League o'Legends tournament represents a joint venture between TED, a College initiative based in the CDU that works directly with primary and post-primary schools, and the PLUS schools network comprising representatives from 18 local Limerick schools. The tournament aims to give the schools a sense of partnership with the College and to give the pupils an opportunity to visit a third-level campus and utilise the award-winning Tailteann sports complex located at Mary Immaculate College.

The Department of German Studies participated in the Limerick's Lifelong Learning Festival. A free public film screening of Fatih Akin's *Solino* was organized by Christiane Schönfeld and sponsored by the Department of German Studies, Mary Immaculate College and the Goethe Institut Dublin. In his film, the German-Turkish filmmaker Fatih Akin tells the story of the Amato family, an Italian couple and their two sons from the small town of Solino, who decide to emigrate to Germany in the 1960s in search of employment. The film is both romantic and tragic-comical in its depiction of friendship and love. The film was shown in the original German with English subtitles.

The French Ambassador to Ireland H.E. Mrs Emmanuelle d'Achon, accompanied by Dr Hadrien Laroche (Scientific & Cultural Adviser), visited Mary Immaculate College on Friday 24 June 2011. She was welcomed by the President, the Dean of Arts and the Head of French Studies in front of the main entrance to the TARA building before being taken for a guided tour of campus during which they had an opportunity to meet staff and students from the Department of French Studies. A reception was held in the Blue Parlour and a meeting with some of the members of the executive committee of the Irish Association for French Studies (ADEFI, www.adeffi.ie) concluded her visit.

JUNE CONT'D 2011

On 27 June, David Ledent (Student and Teaching Assistant in the Department of French Studies) gave his second interview of academic year 2010-2011 on France Culture, one of the most respected French national radio stations. David was invited to talk about his latest book on French sociologist Emile Durkheim. David Ledent had already been invited by famous French philosopher Raphaël Enthoven to speak live on France Culture on 15 November 2010 to talk about his 2009 monography dedicated to the life and works of German sociologist Norbert Elias.

JULY 2011



Dr Joseph McFadden, President Emeritus and Professor of History at the University of St Thomas (UST) in Texas, USA and Executive Director of the International Council of the Universities of St Thomas Aquinas (ICUSTA), visited Mary Immaculate College accompanied by his wife Norma. ICUSTA's main purpose is to encourage cooperation, collaboration and international understanding among its members. ICUSTA fosters student and faculty exchanges through bilateral agreements and promotes other collaborative initiatives such as on-line course offerings related to globalization, faculty lecture exchange opportunities, and faculty collaborative research.





Key Areas of Activity in 2010-11

Music in MIC

The MIC Choral Society joined with the Limerick Choral Union to present Mendelssohn's Elijah in the University Concert Hall on 9 April 2011 under the direction of Dr. Gareth Cox (Head of the Department of Music).

Music students from MIC presented a lunchtime concert in St. Mary's Cathedral, Limerick on 11 May 2011.

International Links

Erasmus Lifelong Learning Programme (LLP)

In 2010-11 the College received a total grant of €64,256 under the Erasmus Lifelong Learning Programme (LLP) via the Higher Education Authority (HEA). This grant was broken down as follows:

- €29,584 for student mobility for studies (SMS);
- €26,137 for student mobility for placements (SMP);
- €2,295 for staff mobility – teaching assignments (STA);
- €6,240 for the organisation of mobility on the basis of the student and staff mobility set out above.

In 2010-11, the total sum of €57,565.91 Erasmus LLP support was disbursed. This was broken down as follows:

- €29,583 for student mobility for studies (SMS) – 22 students;
- €26,137 for student mobility for placements (SMP) – 9 students;
- €1,034.98 for staff mobility – teaching assignments (STA) – 1 teacher;
- €810.93 for the organisation of mobility on the basis of the student and staff mobility set out above.

Erasmus LLP MIC Off-Campus Placement Students – 2010 – 2011

22 students received Erasmus LLP grants for the purposes of studying at a European partner institution in 2010-11; 3 students studied in Augsburg (Universität Augsburg), 2 in Bamberg (Otto-Friedrich-Universität), 2 in Jena (Friedrich Schiller Universität), 4 in Aarhus (Århus Universitet), 4 in Huelva (Universidad de Huelva), 2 in Clermont-Ferrand (Université Blaise Pascal), 3 in Tours (Université Francois Rabelais), 1 student studied in Carmarthen (Trinity College) and 1 in Glamorgan (University of Glamorgan).

9 students received Erasmus LLP grants for the purposes of undertaking a work placement in Europe and all 9 students undertook TEFL work placements in Spain.

Erasmus LLP International Exchange Students

The College welcomed a total of 72 international students during 2010-11. Of this total 46 were Erasmus LLP students from our network of exchange partner universities in Europe as well as 9 students from a fee-paying link with Institut Catholique d'Études Supérieures, La Roche Sur Yon. 43 of these students undertook a single semester of exchange studies (22 in the Autumn semester and 21 in the Spring semester) and the remaining 12 students studied at MIC for the full academic year 2010-11. The students came from: Austria (8 students), Belgium (2 students), Finland (3 students), France (17 students), Germany (6 students), Italy (2 students) Spain (9 students), Sweden (2 students) and The Netherlands (6 students).

Erasmus LLP Teacher Mobility

The College received a grant of €2,295 for Erasmus LLP Teacher Mobility in 2010-11. One faculty member from the Department of Theology & Religious Studies undertook a five day teaching mobility visit to Faculteit der Godsgeleerdheid, Katholieke Universiteit Leuven in February 2011 and received an Erasmus LLP TM grant of €1,034.98 for this purpose.

Australia & USA MIC Off-Campus Placement Students

A total of 19 students studied at the College's partner institutions in Australia and the USA during 2010-11; 2 students studied at the Australian Catholic University in Melbourne, 11 students studied at Frostburg State University in Maryland, 5 students at Loyola University in Chicago and 1 student at Thomas More College in Kentucky.



Other Work

Placements Abroad 2010 - 2011

Three students undertook structured internship programmes at Crotched Mountain Rehabilitation Center in New Hampshire, USA. This work placement provided an invaluable opportunity for students of Psychology to gain hands-on work experience in a client-focused setting. Another student opted to undertake a year-long work placement teaching English as a Foreign Language with the Association for International Teaching, Educational and Curriculum Exchange (AITECE) in Chongqing, China. Another student opted to undertake her Spring semester work placement in the Marketing & PR Department of Harvey Nichols Department Store in London, UK.

Australia & USA International Exchange Students

The College welcomed a total of 72 international students during 2010-11; of this total 17 were non-Erasmus students from our network of exchange partner universities in Australia and the USA. All of these students undertook a single semester of exchange studies (5 in the Autumn semester and 12 in the Spring semester). The students came from: the Australian Catholic University in Melbourne, Australia (2 students), Frostburg State University in Maryland (4 students), the University of St. Thomas, Houston, Texas (1 student), Thomas More College, Kentucky (1 student), Le Moyne College in Syracuse, NYC (3 students), Longwood University, Virginia (2 students), Loyola University, Chicago (2 students) and Regis University in Denver, Colorado (2 students).

MIC Social Club

Mary Immaculate College Staff Social Club has been organising activities for its members since 2003. At present there are over 140 members. Events in 2010-11 included a cruise on the River Shannon as well as a Bunratty Castle Banquet. In addition, the Children's Christmas Party was held in the College Halla with over 70 children meeting our very jolly Santa Claus. During the year 2010-11 the Social Club chose the Make A Wish Foundation as its charity. With wonderful support for its various events most notably the Bake Sale the Club members were delighted to make a cheque presentation to the value of €4059.64 in May 2011.



Masters in Educational Psychology

The MAEP is the one of two professional postgraduate courses in Educational Psychology in the Republic of Ireland. Recognised by the Psychological Society of Ireland this programme was offered for the first time by the Faculty of Education in 2010-2011. It is a two-year full-time course and eleven students registered for this programme in September 2010.

Graduate Certificate/Diploma in Teacher Development

The Graduate Certificate programme began on 15 October with a module on Professional Practice. Entry to the programme was open to all teachers with an interest in teachers' professional learning. Previously, the programme had been confined to mentors who were trained with the National Pilot Project on Teacher Induction.

In harmony with its ethos, and the mission to strive for social justice and equity in society, the College extends a range of services to the local, national and international communities. All academics are members of societies such as the Irish Geographical Society, the International Musicological Society, the British Association of International and Comparative Education, many are involved in committees, such as the Irish Government's Information Society Commission, many are reviewers, members of NCEA, editors, and research grant evaluators, several staff members have been appointed external examiners in other colleges and Universities in Ireland and abroad.

German Theatre Play(time) for Primary School Children at MIC:

A recent survey by Eurostat found that Irish Primary Schools have the lowest level in foreign language tuition in Europe (Irish Times, 25.09.2010). At the same time, employers have been stressing the need for Irish graduates with foreign language skills, and the introduction of foreign languages early in the education lifecycle. "There has been a growing interest in teaching and learning modern foreign languages at primary level in Europe and research shows how enthusiastic teachers and children are. As well as learning languages it helps with cultural awareness and combats stereotypes, and the children are geared up for it when they go to secondary school." (Georgia Herlt, Goethe-Institut Irland).

On 12th October 2010 pupils learning German at primary schools in Adare and Ballyneety (Co. Limerick), visited MIC for a very special "German lesson". After enjoying a theatre performance of the fairytale „Schneewittchen" (Snow White), presented by the actress Simone Mutschler, the children participated in interactive German drama workshops with 2nd Year students of German Studies. The students had prepared for the event through tutorials on teaching German through drama offered by the Department of German Studies. Both visiting children and MIC students had a great time. The event was co-organised by Sabine Egger of the Departments of German Studies (supported by the Department of Drama Education), MIC, Georgia Herlt, Goethe-Institut Irland, and Gina Reilly of the Modern Languages in Primary School Initiative.

Children's Services Committee (CSC) / TED Regeneration

The Transforming Education through Dialogue (TED) Project staff were involved with the Research Sub-committee of the Children's Services Committee to draw up a programme of advising the development of children's services in Limerick City. The programme is founded on a four-phase research programme, which commenced over the summer period 2011. Professor Des McCafferty, Dr. Angela Canny, Dr. Ann Higgins and Dr. Eileen Humphreys, (external independent consultant) were collaboratively successful in securing the tender to gather baseline data on the quality of life of children in the city, namely the 'How Are Our Kids'.

The Curriculum Development Unit

Curriculum Development Unit

The Curriculum Development Unit (CDU) secured €93,000 funding from the DES to undertake a national targeted research project over a 2 year period in partnership with Limerick City Childcare Committee. This study sought to develop a framework for action to support early childhood practitioners in promoting inclusive practice and implementing evidence-based strategies to meet the needs of young children with Special Educational Needs in early childhood settings. The Framework for Action and the Research Report were presented to the DES and the OMCYA on November 11th, 2010. Mary Moloney and Eucharía McCarthy gave a presentation on this research study to senior officials from the DES, OMCYA, NVCC, NCCA and key stakeholders in the ECCE sector. Feedback from the DES and OMCYA was overwhelmingly positive. The final research report and Framework for Action are available in electronic format from the DES and the CDU in Mary Immaculate College. A number of hard copies were printed for dissemination.

The Curriculum Development Unit teamed up with Shannon Development, IT Tralee and Jerry Kennelly (Tweak.com) in 2010 to develop and deliver the Junior Entrepreneur Programme, which is designed to introduce entrepreneurship education to primary schools. The Junior Entrepreneur Programme (JEP) has been a huge success, with over seven hundred 5th and 6th class pupils participating in primary schools in Kerry.



Training workshops for participating teachers and principals were delivered in Killarney and Tralee before the commencement of the programme which was then implemented in schools over a 10 week period (February to April 2011). This project was jointly managed by Eucharía McCarthy, Director CDU and Breda O' Dwyer, Institute of Technology, Tralee. Noranne O'Sullivan worked on the resource pack to support this programme.

A cookbook featuring recipes from Kenmare's award-winning restaurants, cafes and bars scooped the top prize in the inaugural Junior Entrepreneur Programme (JEP). The 21 pupils of 5th class in St. Clare's Girls National School in Kenmare secured top spot with their publication 'Kenmare in our Kitchen' which they produced as a result of their participation in the programme. Following the success of the pilot, JEP will be rolled out more extensively in future years.

Incredible Years Evaluation

TED secured a public tender to evaluate the Limerick Incredible Years programme (administered by PAUL Partnership). This evaluation was managed and conducted by Eucharía McCarthy, Sandra Ryan, Karen Mahony and Fiona O'Connor.

Student Life

Mary Immaculate College Students' Union (MISU)

The Academic Year 2010-2011 was a significant year for MISU and one which highlighted the positive working relationship between the Students' Union and the College. In June 2010, MISU staff moved into their dedicated new space in the TARA Building. This space consisted of a new suite of offices for Students' Union Sabbaticals and Staff, a meeting room for the MISU Executive Committee and Clubs and Societies, a new student lounge and new shop. The building, which was funded by the Students' Union and a student levy, was the fruition of many years of hard work by both the Students' Union and College Management. On a day to day basis, MISU works collaboratively with College Staff and Management on academic issues and issues pertaining to students' health and welfare. Some examples of collaboration which took place over the Academic Year 2010-2011 with MIC services include;

- Access/Disability Office
- The Student Parent Co-ordinator
- The Medical Centre
- Chaplaincy
- Placement Office
- Health Promotion
- Orientation Week



MISU, in conjunction with the MIC Foundation, offered a number of bursaries to the undergraduate students, under the banner of the Award for Excellence. The awards gave recognition to undergraduate students who demonstrate excellence in any area of endeavour, including areas such as music, arts and sport. In 2010-2011, there were 4 recipients of the Award for Excellence and each award was valued at €500. MISU contributed €1,000 towards the Awards in 2010-2011.

Support Services

Student Parent Co-Ordinator (SPC)

The academic year 2010/2011 marked the beginning of the new Grant Aid Agreement with the HSE Crisis Pregnancy Programme, together with part-funding from MISU, which enabled the Student Parent Co-Ordinator (SPC) Project to continue for another three years. The scope of the project was extended from one-to-one support only to include group support and networking for student parents and a research pillar to develop information resources and best practice guidelines to support expectant/student parents nationally. The project was also extended in terms of personnel, to include an independent researcher working one day per week with the SPC and a co-facilitator working on the student parent group initiative (funded by the MISU). In total 73 students engaged with the SPC Project during 2010/2011 and the following was achieved:

- One-to-One Support
- Student Parent Forum
- Child and student parent friendly events on campus
- Sharing the learning/Best Practice/Training

Health Promotion

The Health Promotion Office moved to a new and more central location in October 2010. This relocation served to increase the visibility of the service and to strengthen its role and relevance in the College. The following are just two of the many programmes and sessions rolled out by the Health Promotion Unit during the year:

- A six-week *Lifeskills* programme was provided to a cohort of thirty first-year students in September/October 2010. This voluntary course focused on the transition from second-level to third-level education and on the development of essential skills such as decision-making, assertiveness, communication, organisational and study skills. Students lauded the course and considered it of significant benefit to them in starting out in college. They also advocated extending the course to all students.
- A focus on mental health promotion and suicide prevention was provided to students and staff through the provision of a SafeTALK course by the Limerick Suicide Prevention Office in November 2010. Students and staff were provided with information about the risk factors for suicide and were facilitated in discussing this issue. They were also provided with details of support services available to help those at risk of suicide. In addition, *Headline: The National Media Monitoring Programme for Mental Health and Suicide* visited the College and provided presentations to the Graduate Diploma students in relation to media representations of mental health issues.

Oifigeach na Gaeilge

As a public body Mary Immaculate College has a legislative obligation, under the Official Languages Act 2003, to provide services in the Irish language to the public of equal standard to those provided through English, this added to the importance placed on the Irish language in MIC's Mission Statement: "...*The College promotes a sense of identity enriched by an awareness of its Catholic tradition, the cultures, languages and traditions of Ireland, and its special commitment to the Irish Language...*" led to the appointment of a full-time Irish Officer in 2005 to act as coordinator, facilitator and driver of actions to promote the Irish language amongst staff at MIC. The primary aim of the Irish Language Officer is the promotion of the Irish language among the college community.

During the academic year 2010-2011 classes and other CPD opportunities were afforded to staff to up-skill. A highlight of 2010-2011 was the success of *Seachtain na Gaeilge* in March, during which Gerry Motherway performed his famed one-man show *In High Germany*, and *Raidió na Gaeltachta* broadcast live from MIC, *An Dreoilín* (flash mob as Gaeilge) involving both students and staff was held in the main reception area; a table quiz for staff and *Traid Factor* held in Dolans Bar.



Dáil Thuamhumhan was also held during *Seachtain na Gaeilge* during which Dr Cathal de Paor, Seosamh Ó Cuinneagáin and Liam Ó hAisibéil presented papers to the large attendance present.



An tOifigeach Gaeilge worked closely with *Bord na Gaeilge* and *Roinn na Gaeilge* to organize a series of events to mark the 150th Anniversary of the birth of An t-Athair Ó Duinnín; including a display of his works in the library building, a talk from Prof. Máirtín Ó Murchú, Irish Professor of Celtic studies and Professor Emeritus of the Dublin Institute of Advanced Studies and Máire Nic Mhaoláin, President of *Cumann Aistritheoirí agus Teangairí na hÉireann* (Irish Translators' & Interpreters' Association).

As part of the Conversations in the Consortium series *An tOifigeach Gaeilge* held a workshop entitled *An Ghaeilge i gClár an Rialtais Nua* (Pledges for Irish language and Gaeltacht in new Programme for Government) which gave participants an opportunity to discuss various aspects of Government Language Policy.

In the Academic Year 2010-2011 eight requests for information under the Freedom of Information Act were made to the College. The following is a breakdown of the requests received

| Nature of Request | | | |
|-------------------|--------------|-------|-------|
| Personal | Non-Personal | Mixed | Total |
| 6 | 2 | 0 | 8 |
| Journalist | Business | Staff | Other |
| 1 | 1 | 1 | 5 |

Freedom of Information

New Programmes

During the 2010-2011 the Faculty of Education developed and offered a wide range of new programmes, particularly postgraduate programmes. A key development of the period under review was launch of the Faculty's Structured PhD (Education) degree programme. The Structured PhD (Education) significantly enhanced the profile of the postgraduate enterprise within the College and built postgraduate education and training network capacity regionally, nationally and internationally in terms of the postgraduate skills framework developed by the Irish Universities Association (IUA).

Research in Mathematics

Dr Aisling Leavy and Dr Mairéad Hourigan with Aine McMahon were awarded a National Academy for Integration of Research, Teaching and Learning (NAIRTL) grant under the Grants Initiative 2010 to fund study '*Developing an enquiry led approach to teaching in primary classrooms: The production of video case studies of best practices in the teaching of primary mathematics*'. This grant will support the production of video case studies for the teaching of Data and Geometry in primary classrooms.

Since the introduction of the *BA in Liberal Arts* in 1992, alongside the existing *Bachelor of Education* degree, the total number of students engaged in full-time education at the College has increased by almost precisely a factor of ten, from 297 in Academic Year 1991-92 to 2,969 within the Academic Year 2011-12. By any standard, this growth is remarkable but, as demonstrated by Figure 2.1 (below), there has also been a very high surge rate, with the level of student numbers rising sharply and constantly at all stages within this period.

Postgraduate Office

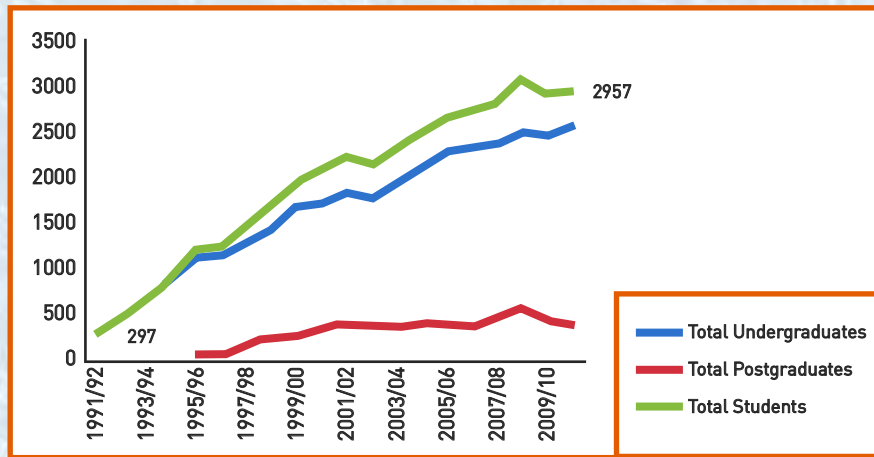
Acknowledging the necessity for general orientation for taught postgraduate students, the Postgraduate Office devised the *Taught Postgraduate Students' Orientation* booklet, which is available on-line, both in the postgraduate section of the MIC website and on the Students' Union Website.

The document *How to Apply for a Postgraduate Programme by Research and Thesis at Mary Immaculate College* was generated to clarify application procedures for applicants and supervisors. This is available on-line and by request from the Postgraduate Office.

Two MIC postgraduate students; Caroline Maguire (History Department) and Aoife McLoughlin (Psychology Department) were awarded IRCHSS (Government of Ireland) Postgraduate Scholarships, to be taken up in September 2011.

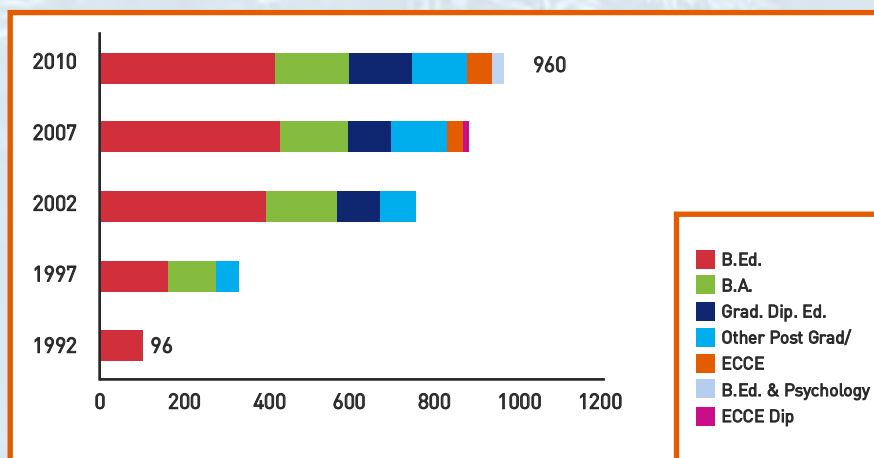
Postgraduate students presented their research at conferences throughout Europe as well as strongly representing the College at Irish institutions while ten PhD students successfully defended their theses throughout the academic year – which was the highest number to date.

Rate of Growth of Full-Time Students, 1992-2010



This pronounced growth trend has followed on foot of continuous diversification of academic offerings. Two new undergraduate degree programmes – the *BA in Early Childhood Care and Education* and the *BEd in Education and Psychology* – were launched in 2003 and 2007, respectively, and a total of 53 postgraduate programmes (to NFQ Level 10) had been developed by 2011. Indeed, the postgraduate population has seen the largest growth curve of any cohort within the student body with 5 times as many postgraduate students registered at the College at outset of the year than in Academic Year 1995-96, when the first entrants to postgraduate study were admitted. With total retention at 96.5%, consistent growth can be seen amongst all proportions of graduates to 2011.

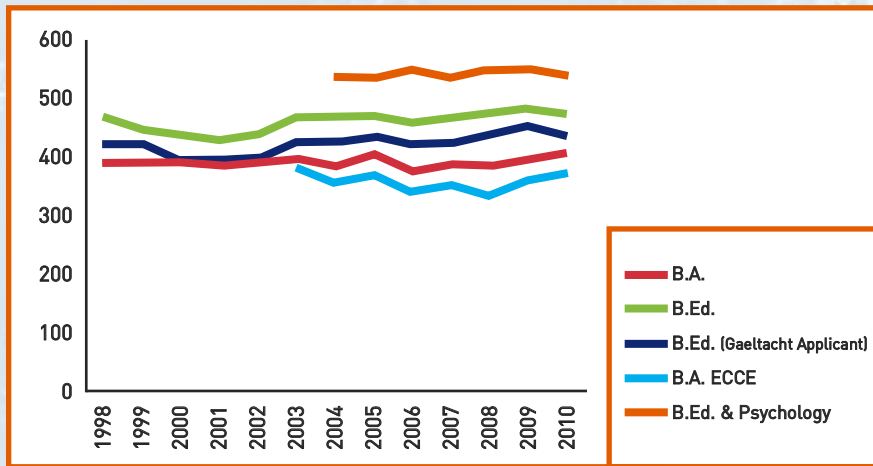
Graduations by Cohort to 2010



Prestige & Stability of Academic Offerings

MIC has coupled a diversification strategy that has allowed it to dramatically increase its share of the wider student population while sustaining an emphasis on providing academic programmes of the highest quality. The College is widely recognised as a Higher Education Institution that offers a superb learning experience with a range of outstanding academic programmes that provide graduates with clear potential for employment or progression to graduate studies or related specialisations. This is clearly demonstrable in the stability of entry requirements which have remained biased towards the high end of the CAO points spectrum consistently. The high points requirements for initial teacher education, especially, reflects both the quality and depth of academic provision at MIC as well as the very high calibre of students attracted to and graduating from MIC. (see Figure 2.5).

CAO Entry Requirements 1998-2010



Participation,
Progression
& Lifelong
Learning

At the heart of the College Mission Statement lies the foundational commitment to promoting equity in society and to providing “an environment where all have freedom and opportunity to achieve their full potential.” One of the key features of the growth experienced by the College has been the diversification of the student population in response to the institutional ethos of inclusive participation, as well to national policy goals under the National Strategy for Equity of Access to Higher Education and its precursors. Development of multiple access routes, supports and outreach strategies has been aimed at providing a menu of opportunities to encourage participation by people who, traditionally, have been most distanced from mainstream educational opportunities at third level.

Our efforts to widen participation on behalf of all members of the community have resulted in significant examples of innovation and increased levels of entry for non-traditional students through a broad range of access pathways such as our Foundation Certificate for Mature Learners, our development of a methodology for supporting ring-fenced CAO entry by students from backgrounds of socio-economic disadvantage (subsequently incorporated by the HEAR Scheme) and a partnership with the National Institute for Intellectual Disability which has led to a dedicated and accredited academic programme for students with intellectual disabilities. The development of the Programme in Contemporary Living (in partnership with the National Institute for Intellectual Disabilities at Trinity College Dublin) is a prime example of Mary Immaculate College’s commitment to lifelong learning and inclusion. This programme offers a unique opportunity for adults with intellectual disabilities to study in a third level setting, many of whom, prior to the introduction of this programme, would not have had the opportunity to pursue their studies in a post-secondary context. The aim of the Programme in Contemporary Living is to promote lifelong learning. The rationale underpinning this programme is based on the ethos that the inclusion of people with intellectual disabilities within third level institutions is a means of promoting full citizenship through the provision of educational learning opportunities and is aligned with that of the Education for Persons with Special Needs Act (EPSEN 2004).

Fifteen students with Intellectual Disability from Limerick City and County, Clare, Tipperary and Cork participated on this programme in 2010. Owing to the generous support of the JP McManus Foundation and of the Sisters of Mercy, Mary Immaculate College has been able to continue the programme and a further fifteen students were enrolled in 2011. Mary Immaculate College will begin a new Inclusion Partnership Programme in the 2012-2013 academic year, in parallel with the Programme in Contemporary Living. In conjunction with

the Brothers of Charity in Clare, MIC will welcome four students to take part in a new venture whereby students will have the opportunity to select from, and participate in, modules drawn from mainstream courses within the institution.

| Wider Participation at MIC: 2010 | | | | |
|---|------------|-----------------------|-----------|------------------|
| Student Group | BEd | BEd (Ed/Psych) | BA | BA (ECCE) |
| Disability | 1.9% | 0 | 9.0% | 0 |
| SED* | 4.0% | 6.1% | 3.8% | 1.7% |
| Mature | 11% | 6% | 17% | 10% |

* Background of Socio-Economic Disadvantage

Access

Mary Immaculate College participated in the national Higher Education Access Route for the first time in September 2010 and welcomed 29 new students via the HEAR scheme.

The Access team attended careers fairs and HEAR Advice Clinics in Limerick and Athlone as well as school visits offering pre-entry advice and information to prospective students.

The College organised a HEAR orientation on campus in September for new HEAR students. Workshops to help with the transition to third level college life covered such topics as Time Management, Healthy life styles, Stress Management and Communication skills.

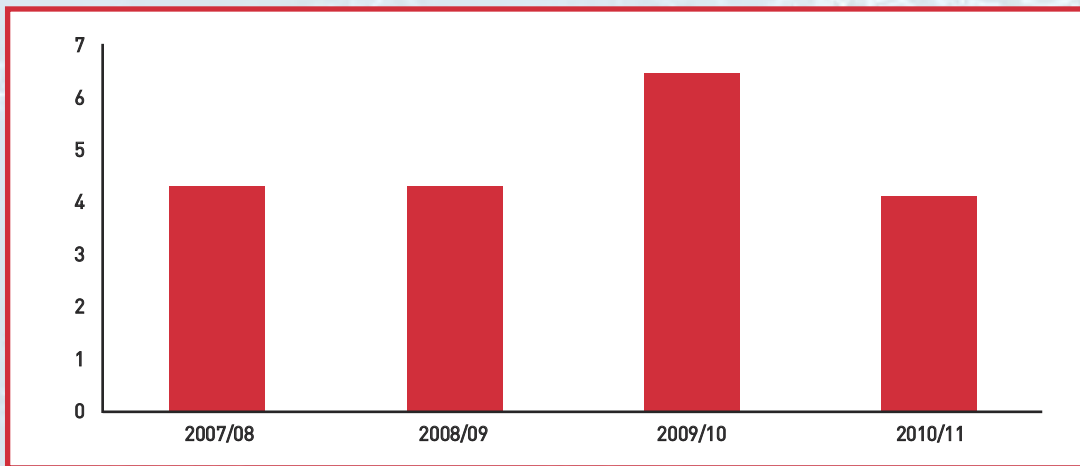
MIC was delighted to sign a service level agreement with the UL assistive Technology Assessment Centre during 2010/2011 which provided our students with an assistive technology assessment and AT training. This AT assessment formed part of the overall evaluation of the students' educational needs.

The Access office actively supports mature students and we were pleased to be involved in arranging extra IT classes for mature students. The feedback from the mature students was very positive and encouraging.

Retention

Student attrition rates at MIC rank among the lowest in the country with the total non-completion rate for Academic Year 2011-12 standing at just 3.51%. Taking First Year as the critical juncture for progression, non-completion rates remain consistently low and where non-completion occurs, there is a correspondingly high rate of transfer to other higher education programmes reflecting our concerted efforts to facilitate retention of students within the higher learning system where possible by coordinating with other HEIs. The College invests significantly in maintaining its positive retention rates through its Learner Support Unit (LSU). LSU staff are highly committed and provide tailored, one-to-one academic support, with over 1,000 sessions per Academic Year.

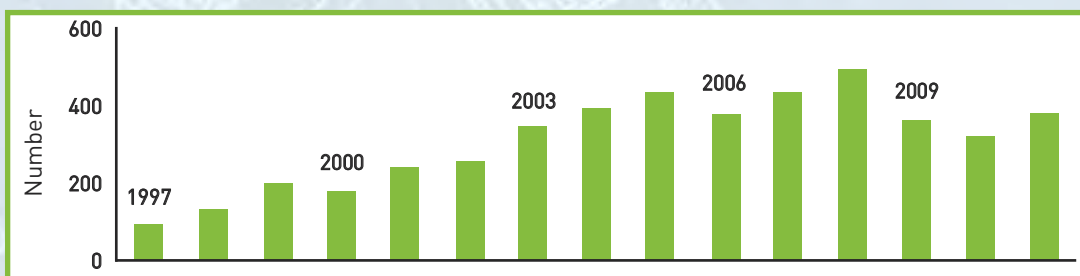
Non-Completion Rates (First-Second Year Transition) 2007-2011



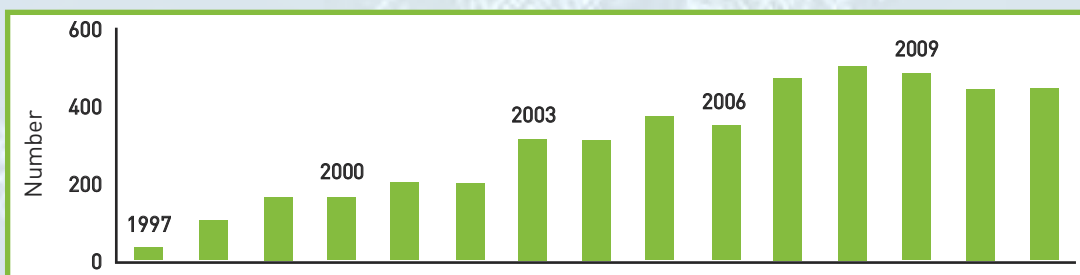
Research

In pursuing specifically targeted research activities within its core fields, Mary Immaculate College has put in place research support structures to underpin its research vision and strategy. The College Research Office is led by Professor Michael Healy, Associate Vice President Research and Chair of the Research Committee. The scale of research activity within the College has increased substantially over the last 15 years, with the number of staff publications, conference presentations and research output generally increasing significantly throughout that time. In this context and in accordance with the Strategic Plan and the College Mission Statement, the Research Office supports all researchers who contribute to high quality research, thus informing and strengthening the educational and service functions of the institution for its students, staff and the community at large. In this way MIC emphasises the importance of maintaining a research environment committed to the generation of new knowledge and the education of student teachers and other students by research-active teachers.

Research Publications 1997-2011

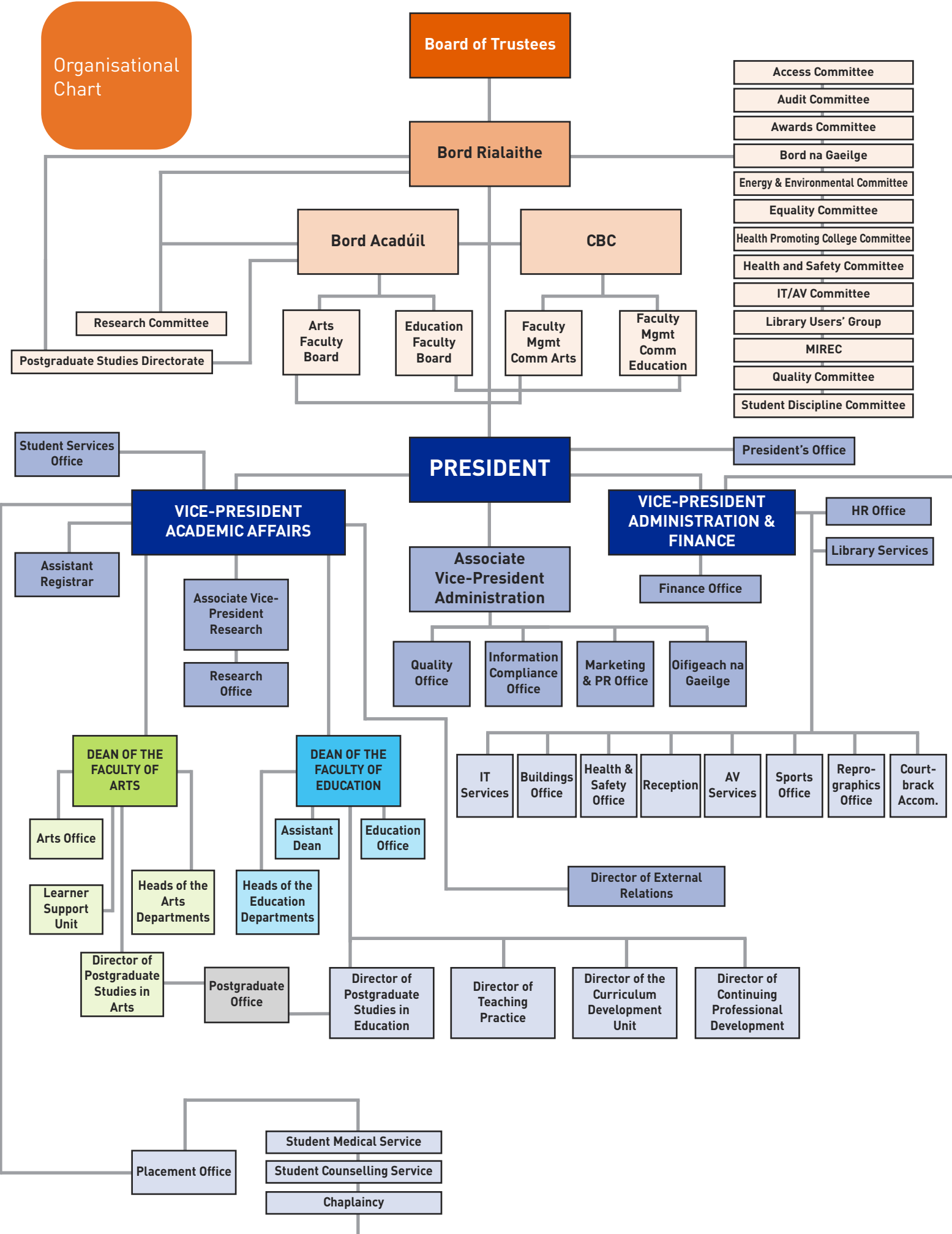


Conference Presentations 1997-2011



Mary Immaculate College reiterates its commitment to the provision of comprehensive support and resources for the on-going development of the research skills base of our staff and students. In recent years the College has invested heavily in this area through financial supports, staff up-skilling, external collaboration and dedicated administrative structures. In the current year 2010 – 2011 the College has invested in essential infrastructure for research support. Examples include the establishment of the Mary Immaculate Research Ethics Committee (MIREC) and the initiation of the Mary Immaculate Research Repository (MIRR) as an open access digital resource and archive for research conducted at MIC. These efforts will be maintained and developed further, and the cross-fertilisation of research with teaching and learning will be a particular focus for MIC in the coming years, along with an increased emphasis on research that contributes significantly to public policy. Through research and knowledge transfer, Mary Immaculate College will contribute to the Irish economy as well as to quality of life at local, regional, national and international levels.

Organisational Chart



INCOME & EXPENDITURE ACCOUNT FOR THE YEAR ENDED 30 SEPTEMBER 2011

| | Note | 2011 Euro | 2010 Euro |
|--|--------|-------------------------|-------------------------|
| INCOME | | | |
| Grants | 1 | 9,899,797 | 11,531,563 |
| Capital Grant – Building Development | 1 | 1,084,467 | 10,115,103 |
| Student Fees | 2 | 14,986,282 | 15,234,288 |
| Other Income | 3 | 3,704,212 | 2,522,333 |
| Research and Self-Funding Programmes | 8(c-e) | 1,855,867 | 1,873,087 |
| Non Deferred funding for Pensions | 12(b) | 6,474,499 | 6,863,723 |
| Total Income | | <u>38,005,124</u> | <u>48,140,097</u> |
| Transfer to Capital Account | 9 | (3,035,809) | (9,190,939) |
| Transfer from/(to) Development Reserve | 10 | 1,301,510 | (1,228,621) |
| Transfer to Accommodation Reserve | 11 | (291,110) | (265,917) |
| | | <u>35,979,715</u> | <u>37,454,620</u> |
| EXPENDITURE | | | |
| Operating Expenditure | 4 | (25,976,305) | (26,282,200) |
| Pension Costs | 12(c) | (7,863,863) | (8,272,565) |
| Research and Self-Funding Programmes | 8(c-e) | (1,855,867) | (1,873,087) |
| Surplus for year | | 283,680 | 1,026,768 |
| Opening Balance | | <u>2,923,050</u> | <u>1,896,282</u> |
| Balance at 30 September | | <u><u>3,206,730</u></u> | <u><u>2,923,050</u></u> |

On behalf of An Bord Rialaithe

Michael Hayes

Prof. Michael A Hayes
President

John Coady

Mr John Coady
Vice President Administration & Finance

Energy

Overview of Energy Usage 2010

With the opening of the new TARA Building and the increase in student numbers from 2655 in 2005/2006 to over 3000 in 2010/2011, it is not envisaged that there will be a reduction in energy usage. However without the efficiency measures that were introduced the energy use would be even higher.

In 2010 Mary Immaculate College consumed 6,548Mwh of energy, consisting of:

- 2,145MWh of electricity
- 4,399 MWh of natural gas
- 4.4 MWh of transport fuels (diesel)

Actions undertaken in 2010

Mary Immaculate College undertook a range of initiatives to improve our energy performance including the energy efficiency lighting upgrade in a number of buildings on campus.

Overview of Energy Usage 2011

There are several ESB meters feeding the campus at MIC. The principle meter being the unit that supplies the main building. This meter also records energy in several other buildings and accounts for over 91% of energy consumed on campus.

In 2011, MIC consumed 6,491 MWh of energy, consisting of:

- 2134 MWh of electricity
- 4,356 MWh of natural gas
- 4.3 MWh of transport fuels (diesel)

Actions undertaken in 2011

Sub meters for both gas and electricity were installed and are recorded monthly. The meters can give a pulsed output using Modbus technology and make possible the future Monitoring and Targeting of building energy usage. Future DEC's will also be more realistic. Sub meters were installed in many buildings.

STUDENT NUMBERS FOR ACADEMIC YEAR 2010-11

| | FULL-TIME | | | | | | | | PART-TIME | | | | Total |
|--|-----------|-----|--------|-----|--------|-----|--------|-----|-----------|----|--------|----|-------------|
| | Year 1 | | Year 2 | | Year 3 | | Year 4 | | Year 1 | | Year 2 | | |
| Course: | M | F | M | F | M | F | M | F | M | F | M | F | |
| BA Liberal Arts | 93 | 151 | 84 | 146 | 59 | 151 | 51 | 125 | | | | | 860 |
| BA ECCE | 3 | 55 | 1 | 55 | 2 | 55 | 2 | 47 | | | | | 220 |
| B.Ed Education & Psychology | 1 | 26 | 5 | 27 | 5 | 26 | 2 | 30 | | | | | 122 |
| B.Ed Education | 114 | 314 | 89 | 318 | 81 | 380 | | | | | | | 1296 |
| Cert. in Return to Learning - Access to Higher Education | | | | | | | | | 23 | 24 | | | 47 |
| Cert. in Theology & Religious Studies | | | | | | | | | 6 | 3 | | | 9 |
| Grad. Cert. in Teacher Development | | | | | | | | | 1 | 9 | | | 10 |
| Grad. Dip. In Adult Education | | | | | | | | | 2 | 13 | | | 15 |
| Grad. Dip. In Education (Primary Teaching) | | | | | | | | | 37 | 87 | | | 124 |
| Grad. Dip. In ICT | | | | | | | | | 3 | 6 | | | 9 |
| Grad. Dip. Special Education Needs | | | | | | | | | 9 | 37 | | | 46 |
| MA Biblical Studies | | | | | | | | | | | | 1 | 1 |
| MA Christian Spirituality | | | | | | | | | | | | 1 | 1 |
| MA Christian Leadership in Education | 6 | 6 | | | | | | | | | | | 12 |
| MA Educational Psychology | 1 | 8 | | | | | | | | | | | 9 |
| MA sa Ghaeilge | 2 | 9 | | | | | | | | | | | 11 |
| MA in History | 8 | 9 | | | | | | | | | | | 17 |
| MA Irish Media Studies Full Time | 5 | 2 | | | | | | | | | | | 7 |
| MA Irish Media Studies Part Time | | | | | | | | | | | 1 | 1 | 2 |
| MA Music Education | | | | | | | | | | 9 | | | 9 |
| MA Philosophy & Literature | 3 | 1 | | | | | | | | | | | 4 |
| MA Theology | | | | | | | | | | | | 1 | 1 |
| MA Theological Studies | | | | | | | | | 3 | 2 | 1 | 3 | 9 |
| M.Ed Adult Education | | | | | | | | | 2 | 2 | 1 | 2 | 7 |
| M.Ed Education | | | | | | | | | 3 | 13 | 4 | 16 | 36 |
| M.Ed ICT | | | | | | | | | 2 | 7 | | | 9 |
| M.Ed Special Education Needs | | | | | | | | | | 9 | | | 9 |
| M.Ed Teacher Development | | | | | | | | | | 2 | | | 2 |
| MA Research Arts | 6 | 8 | 5 | 7 | | | | | | | | | 26 |
| MA Research Education | 1 | 2 | 1 | 1 | | | | | | | | | 5 |
| PhD Arts | 3 | 7 | 3 | 6 | 6 | 11 | | | | | | | 36 |
| PhD Education | 1 | 2 | | 3 | 4 | 2 | | | | | | | 12 |
| Structured PhD (Education) | 4 | 5 | | | | | | | | | | | 9 |
| Grand Total | | | | | | | | | | | | | 2992 |

GRADUATION NUMBERS FOR ACADEMIC YEAR 2010-11

| COURSE | NO. GRADUATED |
|---|---------------|
| BA Liberal Arts | 169 |
| BA (ECCE) | 49 |
| Bachelor of Education | 456 |
| Bachelor of Education in Education and Psychology | 32 |
| Certificate in Youth and Community Work | 9 |
| Doctor of Philosophy | 10 |
| Graduate Diploma in SEN | 42 |
| Graduate Certificate in Teacher Development | 9 |
| Graduate Diploma in Adult Education | 15 |
| Graduate Diploma in Education (Primary Teaching) | 59 |
| Graduate Diploma in ICT | 9 |
| M.Ed (Mentoring & Teacher Development) | 2 |
| M.Ed. | 21 |
| M.Ed. (Adult & Continuing Education) | 5 |
| M.Ed. (Early Childhood Education) | 1 |
| M.Ed. (Special Educational Needs) (SEN) | 9 |
| M.Ed. in ICT | 10 |
| Máistir sna Dána (Gaeilge) | 8 |
| Master of Arts (Biblical) | 1 |
| Master of Arts (Christian Spirituality) | 1 |
| Master of Arts (History) | 15 |
| Master of Arts (Modern English Literature) | 2 |
| Master of Arts (Philosophy & Literature) | 3 |
| Master of Arts (Research & Thesis) | 7 |
| Master of Arts (Theological Studies) | 2 |
| Master of Arts (Theology) | 2 |
| Master of Arts in Irish Media Studies | 9 |
| TOTAL GRADUATED | 957 |