

DOCTORATE IN EDUCATIONAL AND CHILD PSYCHOLOGY

MIC, Limerick



KEY PROGRAMME FEATURES

In addition to taught modules, delivered in four-day blocks over the first two years, a variety of workshops are organised for students and delivered by experienced practitioners including:

- Cognitive Behaviour Therapy
- Video Enhanced Reflective Practice
- Autism Spectrum Disorder
- Child and Adolescent Mental Health
- Working Systemically with the Family

One day per week is typically assigned to study.

Professional placements totalling over 300 days are organised in a variety of settings including HSE psychological services and school psychology services (Primary Care, Disability, CAMHS, NEPS).

Students typically attend placements for 3-4 days per week.

Over the three years, students complete a research thesis, making an original contribution to the field of educational psychology and with the potential for peer-reviewed publication.

APPROACH TO TEACHING AND LEARNING

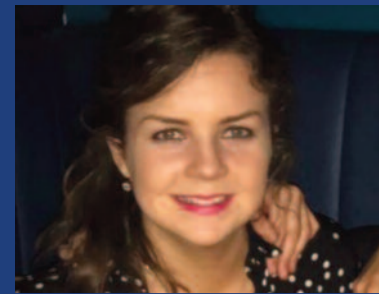
The programme utilises approaches to learning that are problem-based and collaborative. Students are provided with opportunities to construct knowledge in an active manner by working through real-life case studies and examples, linking psychological theory and research to professional practice.

The Programme team recognises that they are engaging with adult, professional learners and employ methods that deliver a robust learning experience.

Assessment methodologies include practicals, essays, presentations, literature reviews, reflections, reports, portfolios and case-based learning outcomes.

“At MIC, DECPsy students are encouraged and supported to be proactive in determining what and how they learn, and to grasp opportunities which contribute to our competency development. One of the best aspects of the student journey is being part of a small, close class group, sharing learning and experiences, and building friendships.” DECPsy Year 2 Student

The DECPsy Programme is accredited by the Psychological Society of Ireland (PSI). Graduates are eligible to apply for Chartered Membership of the Psychological Society of Ireland and for full membership of the Division of Educational Psychology.



Alison O'Keeffe
DECPsy Graduate

“Training to be an educational psychologist is an exciting, varied and challenging experience. On the DECPsy programme, there is a strong emphasis on the application of theory and research to practice. Across placements in disability, educational and child and adolescent psychology settings, we have the opportunity to hone knowledge and skills, to learn from experienced psychologists and to sample potential career pathways. At MIC, trainees are encouraged and supported to be proactive in determining what and how they learn and to grasp opportunities which contribute to our competency development. One of the best aspects of the trainee journey has been being part of a small, close class group, sharing learning and experience, and building friendships”.



Mary Immaculate College

ENTRY REQUIREMENTS:

By the closing date for applications applicants must have:

1. A minimum upper second class honours (2.1) degree in psychology or an equivalent qualification, recognised by the Psychological Society of Ireland or equivalent, as conferring eligibility for Graduate Membership.
2. An equivalent of 2-year's relevant full-time experience working in the field of education or psychology or both.

CONTACT INFORMATION

Dr. Therese Brophy, Programme Leader

Doctorate in Educational and Child Psychology (DECPsy),
Department of Educational Psychology, Inclusive and Special Education,
Mary Immaculate College, South Circular Road, Limerick, Ireland, V94 VN26

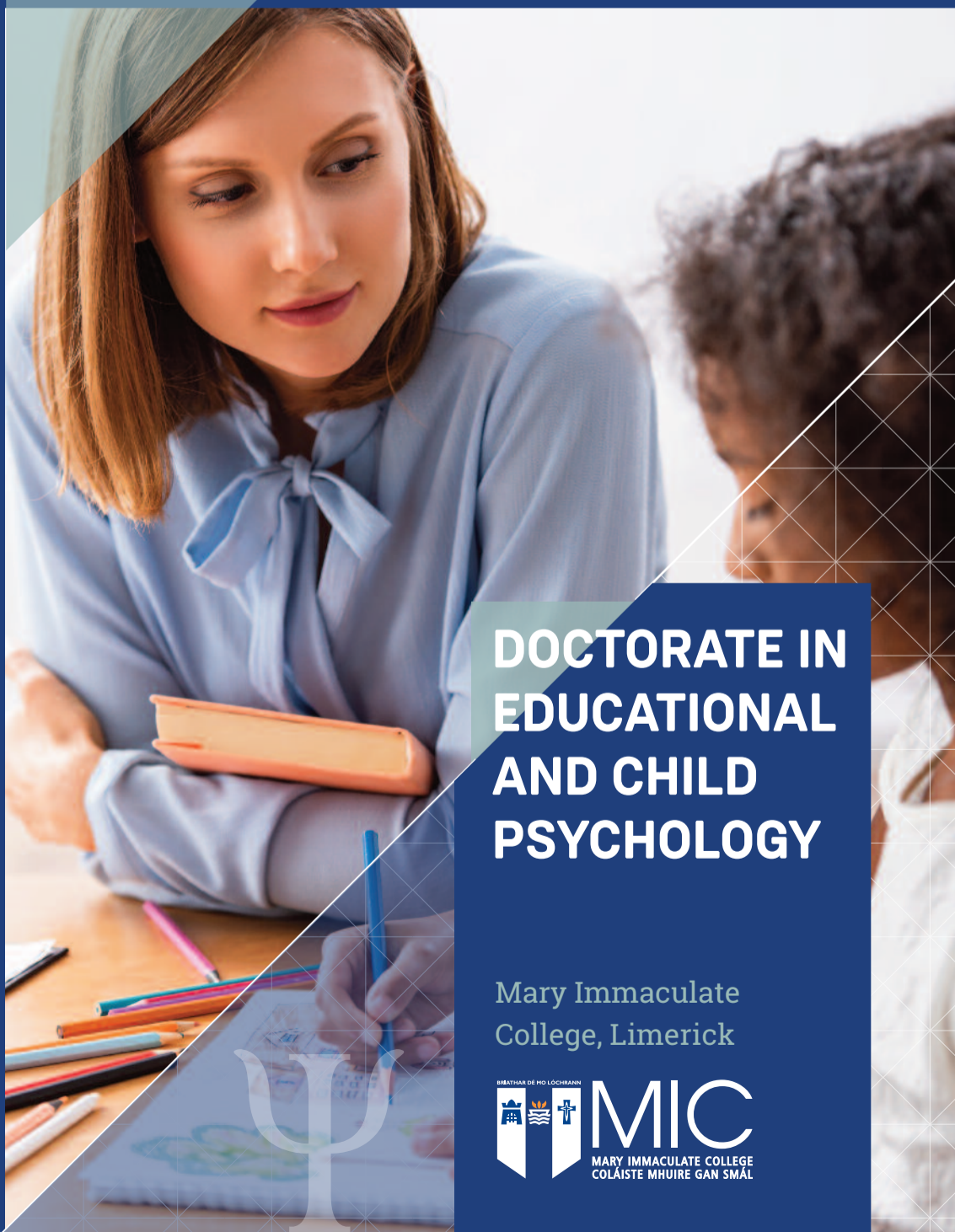
E: therese.brophy@mic.ul.ie



www.mic.ie



The College has endeavoured to ensure that the information contained herein is accurate at the time of printing. The College reserves the right to alter its policy and practice in relation to its postgraduate programmes.



DOCTORATE IN EDUCATIONAL AND CHILD PSYCHOLOGY

Mary Immaculate
College, Limerick



DOCTORATE IN EDUCATIONAL AND CHILD PSYCHOLOGY

Mary Immaculate
College, Limerick

CONTACT INFORMATION

Dr. Therese Brophy, Programme Leader
Doctorate in Educational and Child Psychology
(DECPsy),
Department of Educational Psychology,
Inclusive and Special Education,
Mary Immaculate College, South Circular Road,
Limerick, Ireland, V94 VN26
E: therese.brophy@mic.ul.ie

